



# SIGNATURELED

LUXURY SIGNAGE SOLUTION



# CONTENTS

LP1: SIDE LIT PAGE 2

---

LP3: HALO LIT PAGE 4

---

LP4: FACE LIT PAGE 6

---

FAUX NEON PAGE 8

---



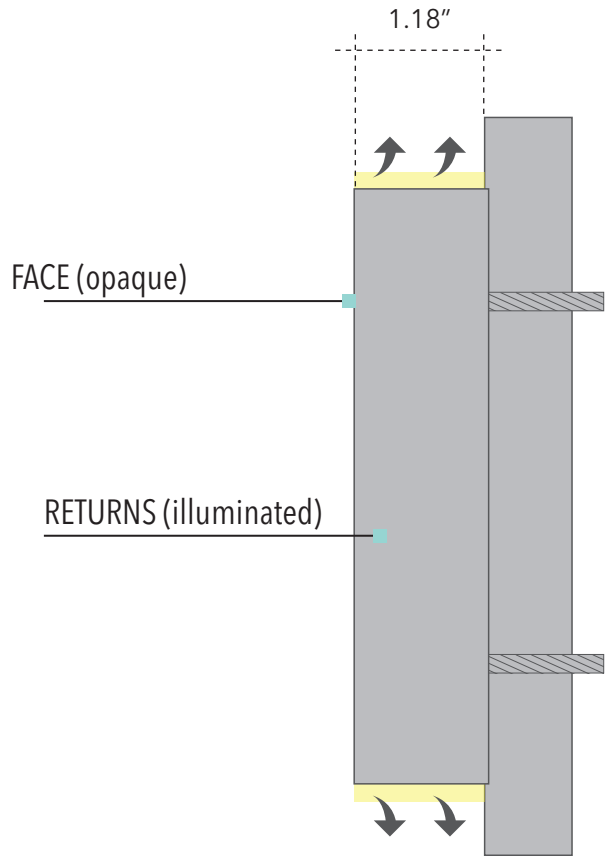
LP1

SIDE LIT



**SPECIFICATIONS**

ILLUMINATION:	Side Lit or Partial Side Lit
MATERIAL:	Acrylic
MIN. RETURN DEPTH:	0.59" (15 mm)
MIN. HEIGHT:	2.99" (76 mm)
MIN. STROKE:	0.43" - 0.78" (11 - 20 mm)
LIFESPAN:	100,000 operational hours
VOLTAGE:	24 volt



**CHARACTERISTICS**

- Perfect contrast to opaque core
- Easy to read
- Low power consumption
- \*Illumination Combinations: Side & Face Lit, Partial Side & Face Lit, Side & Halo Lit





**LP3**

**HALO LIT**

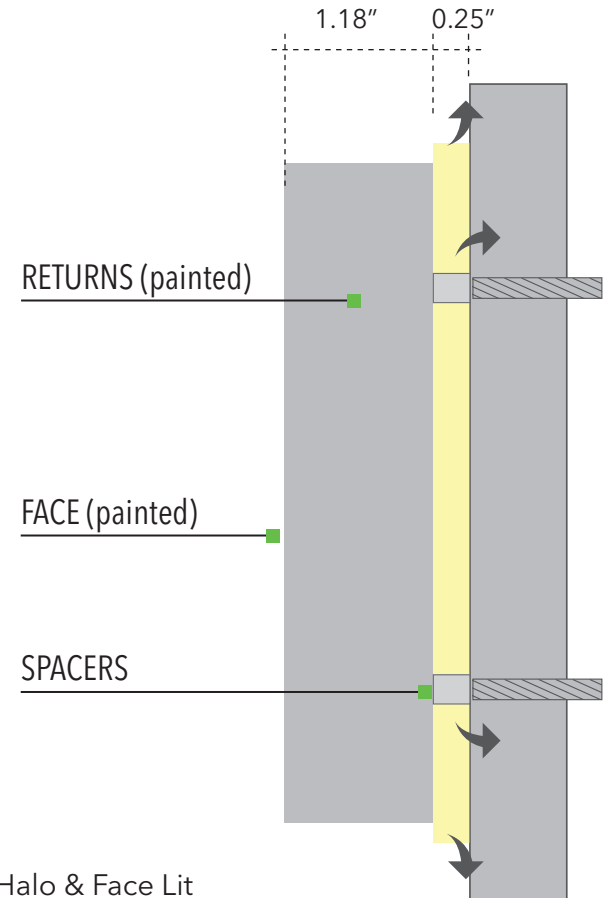
**SPECIFICATIONS**

ILLUMINATION:	Halo Lit
MATERIAL:	Acrylic
MIN. RETURN DEPTH:	0.59" (15 mm)
MIN. HEIGHT:	1.9" (50 mm)
MIN. STROKE:	0.43" (11 mm)
LIFESPAN:	100,000 operational hours
VOLTAGE:	24 volt

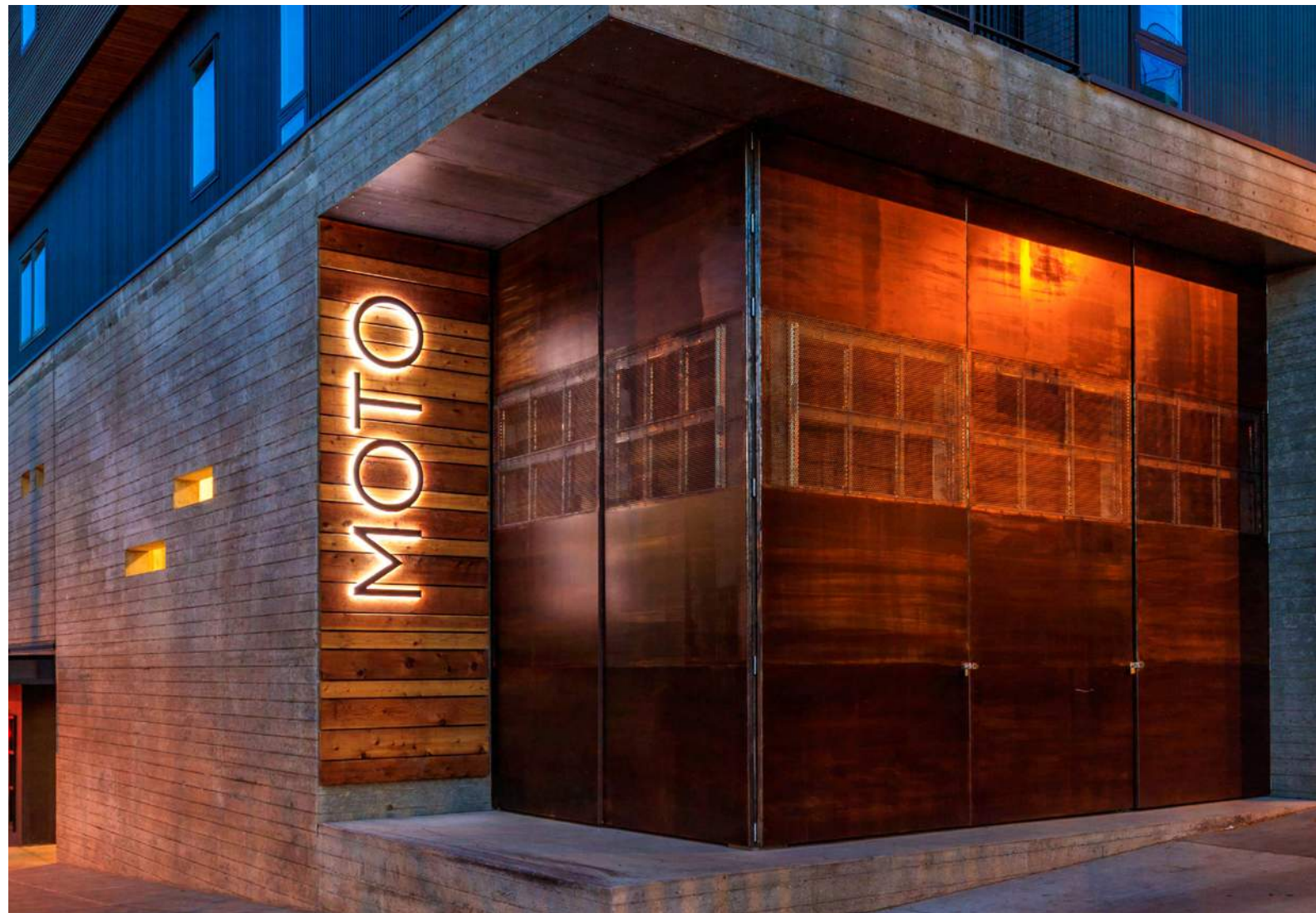


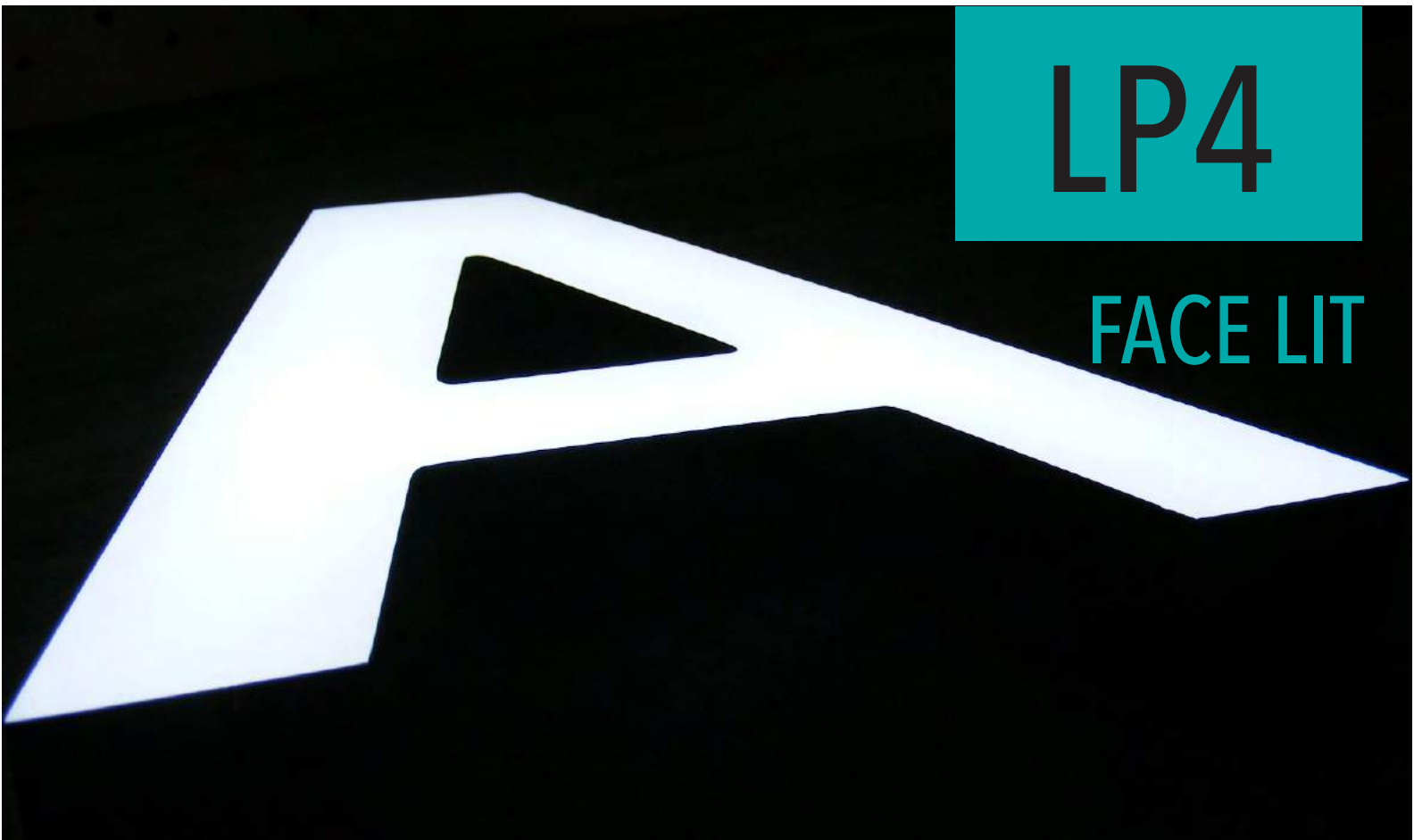
**CHARACTERISTICS**

- Different colors dictated by LED or vinyl
- Laser cutting available for sharp corners
- Lowest power consumption
- \*Illumination Combinations: Halo & Partial Side Lit, Halo & Side Lit, Halo & Face Lit



NOTE: Dimensions are based off of typical letter sizes. Depending on the font, logo, or design, some strokes and dimensions can be routed smaller, thinner, or with more detail.  
 FOR QUOTES: Send logo in Adobe Illustrator or embedded PDF format to SIGLED@COLITE.COM for quotation.





**SPECIFICATIONS**

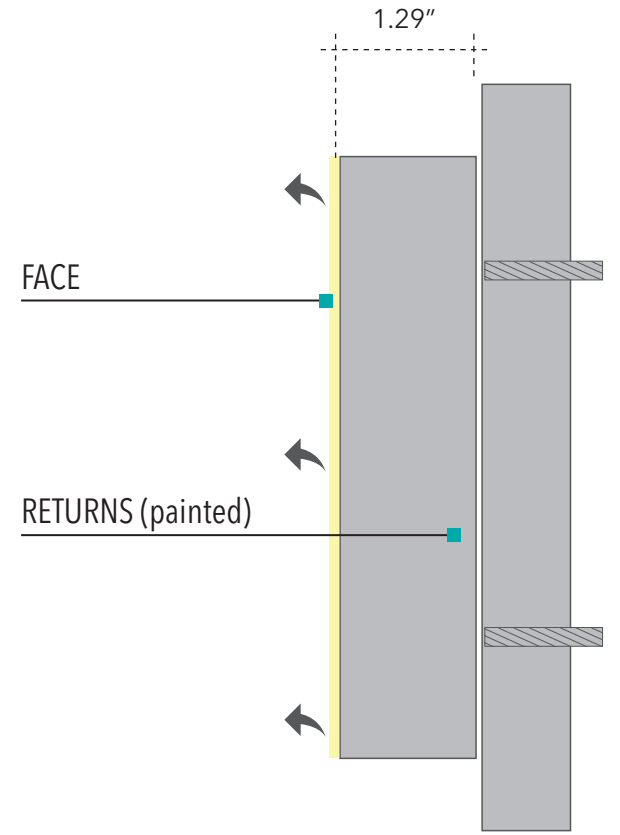
ILLUMINATION:	Face Lit
MATERIAL:	Acrylic
MIN. RETURN DEPTH:	1.18" (30 mm)
MIN. HEIGHT:	2.48" (63 mm)
MIN. STROKE:	Approx. 1/2" (12 mm)
LIFESPAN:	100,000 operational hours
VOLTAGE:	24 volt



**CHARACTERISTICS**

- Different colors dictated by LED, vinyl, acrylic, or paint
- High illumination output
- Dimmable illumination setting is an option

\*Illumination Combinations: Face & Side Lit, Face & Partial Side Lit, Face & Halo Lit



NOTE: Dimensions are based off of typical letter sizes. Depending on the font, logo, or design, some strokes and dimensions can be routed smaller, thinner, or with more detail.  
 FOR QUOTES: Send logo in Adobe Illustrator or embedded PDF format to SIGLED@COLITE.COM for quotation.





## SPECIFICATIONS

ILLUMINATION:	Neon LED Face Lit
MATERIAL:	Acrylic (Polished or Matte)
MIN. RETURN DEPTH:	1.18" (30 mm)
MIN. HEIGHT:	2.99" (76 mm)
MIN. STROKE:	0.47" (12 mm)
LIFESPAN:	100,000 operational hours
VOLTAGE:	24 volt



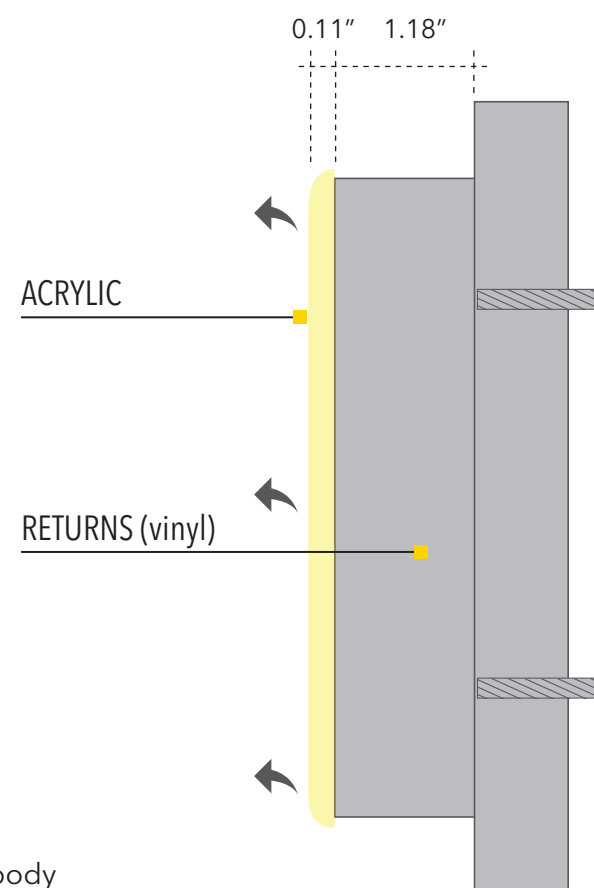
## CHARACTERISTICS

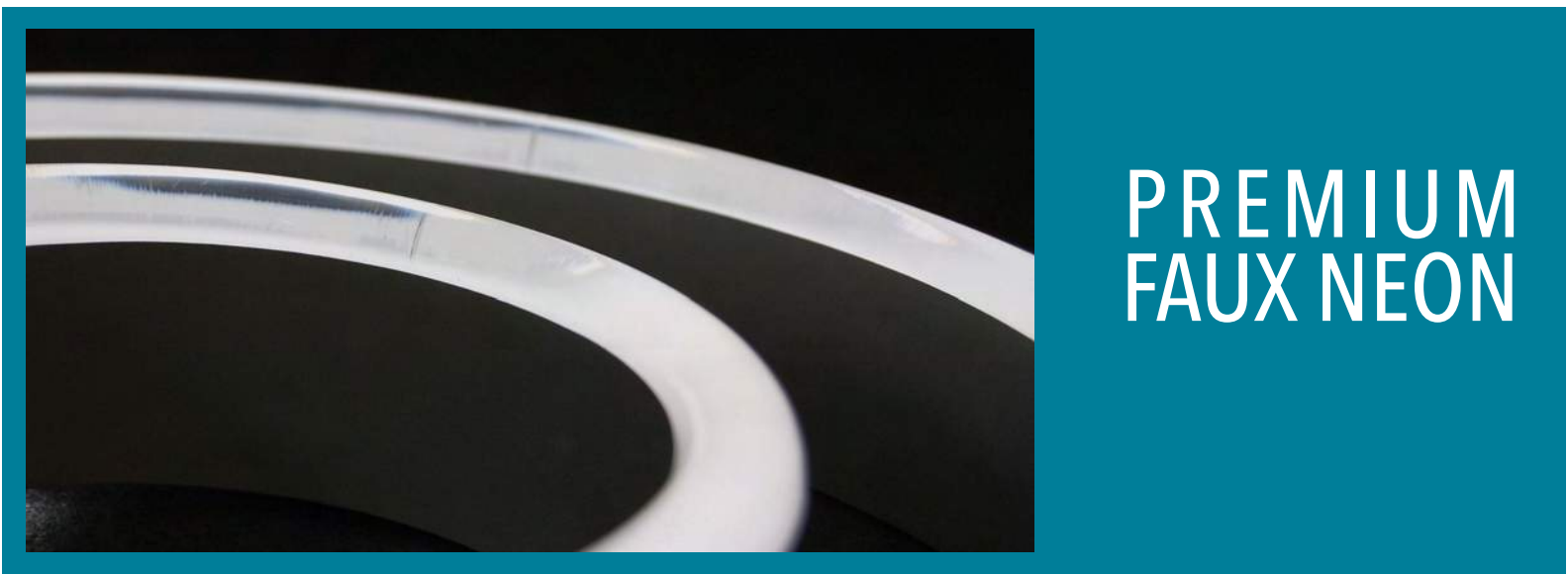
Different colors dictated by LED, vinyl, or acrylic

High illumination output

Faux Neon comes in two finishes:

Premium - Polished acrylic overlay and Standard - Rounded single body matte acrylic overlay

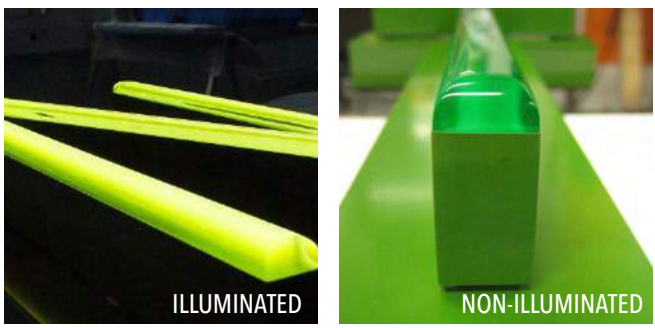




# PREMIUM FAUX NEON

## CHARACTERISTICS

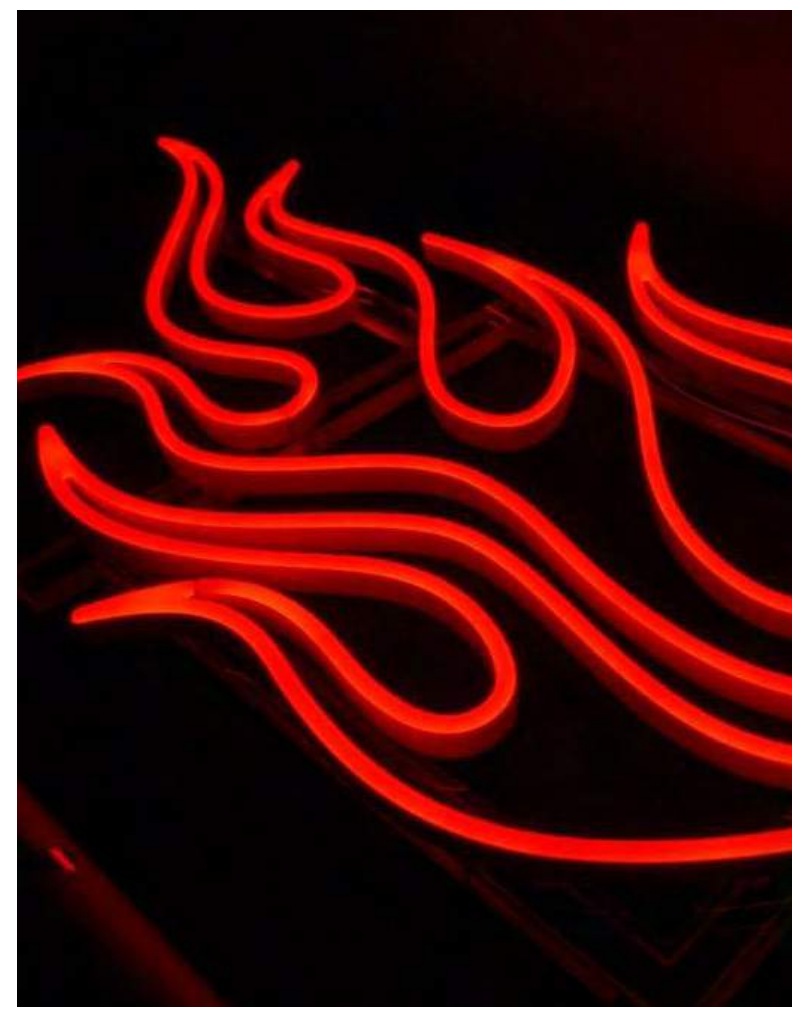
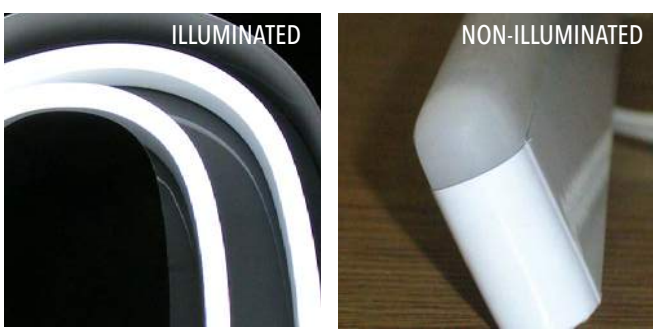
- COLOR:** Colored acrylic and LED determine color  
LED Options: White to Warm White, Green, Blue, Red, Amber
- FINISH:** Polished Finish
- CONSTRUCTION:** Comprised of three acrylic layers



# STANDARD FAUX NEON

## CHARACTERISTICS

- COLOR:** LED determines color  
LED Options: White to Warm White, Green, Blue, Red, Amber
- FINISH:** Rounded Matte Finish
- CONSTRUCTION:** Single acrylic body



# SIGNATURELED

LUXURY SIGNAGE SOLUTION



[www.colite.com](http://www.colite.com)  
5 Technology Circle Columbia, SC 29203  
P 803 926.7926 E [sigled@colite.com](mailto:sigled@colite.com)